

FAQ No. 01659**Switchable Graphics**

Affected Model: All NB models with switchable graphics

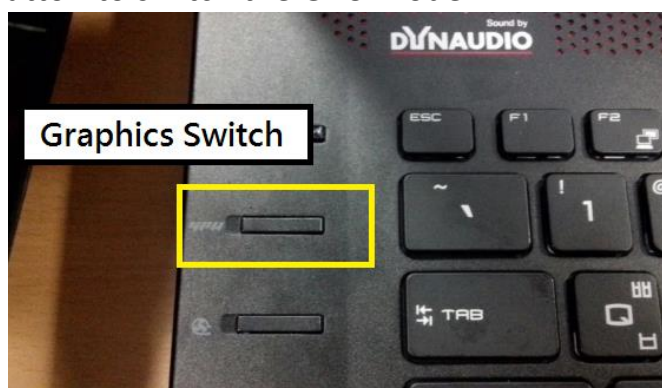
Q: How to switch the graphics between integrated graphics (iGPU) and the discrete graphics (dGPU)?

A: Follow the below steps to manually switch the graphics to different GPU mode or set up the graphics for the program in NVIDIA Control Panel.

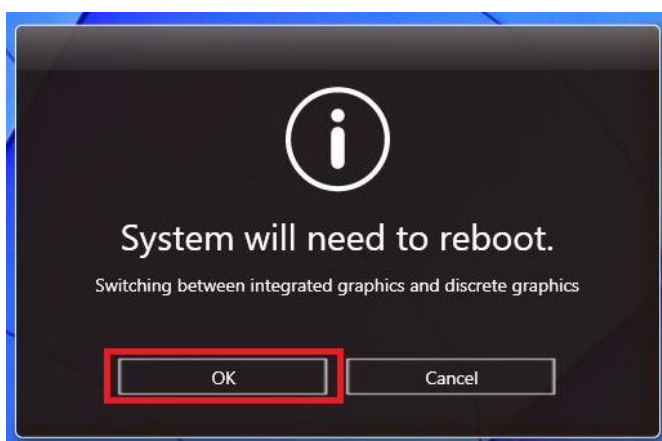
[Models with Non-Optimus Structure]

Models with non-Optimus Structure, it has the Graphics Switch button (for example, GT72 or GT80), you need to manually switch the GPU mode.

- I. Press the GPU button to switch the GPU mode.

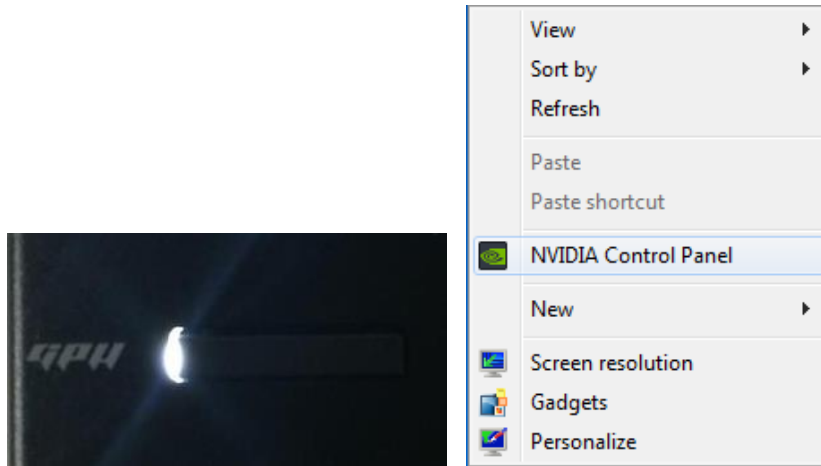


- II. Click "OK" to restart the system and switch to the integrated graphics (iGPU) or the discrete graphics (dGPU) mode.

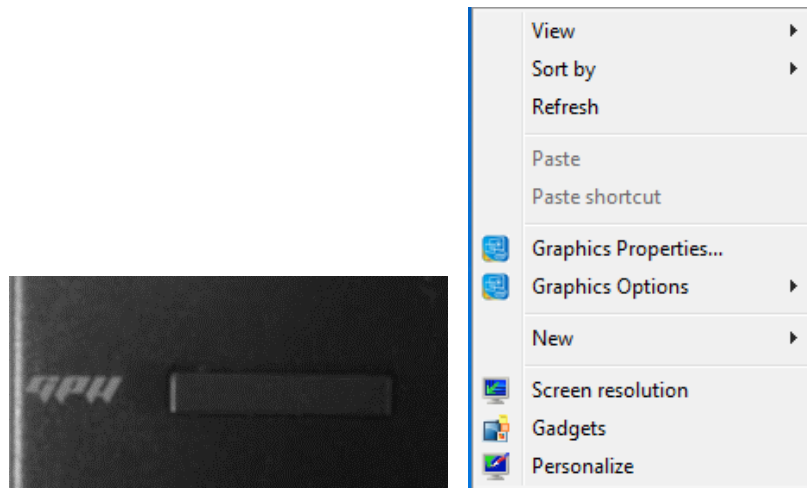


***NOTE:**

When the Graphics Switch button lights on, the system is under dGPU mode.



When the Graphics Switch button does **NOT** light on, then the system is under iGPU mode.

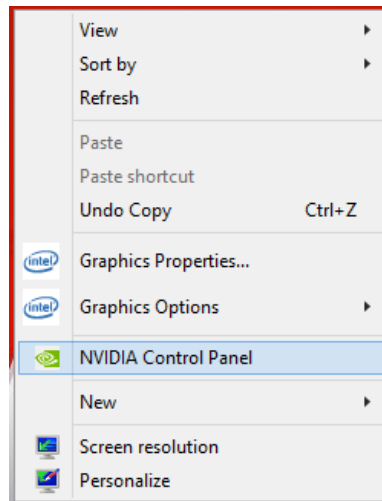


[Other Models – Optimus structure]

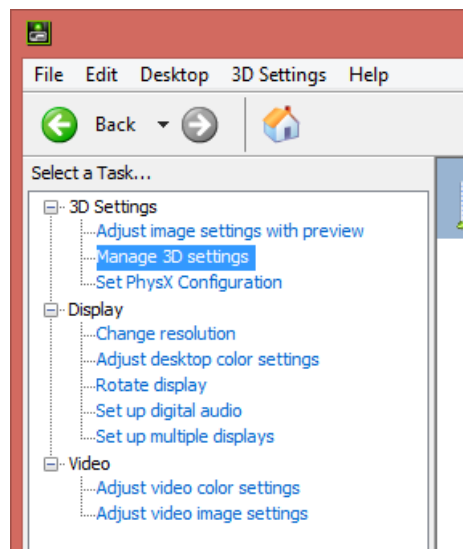
For models with the optimus structure (auto switched graphics), you need to set the program to use the discrete GPU in NVIDIA Control panel.

*Most games should be already added to NVIDIA's profile and has the default set by using the discrete GPU, but for those which doesn't set the discrete GPU as the default graphics, you'll need to set them up manually.

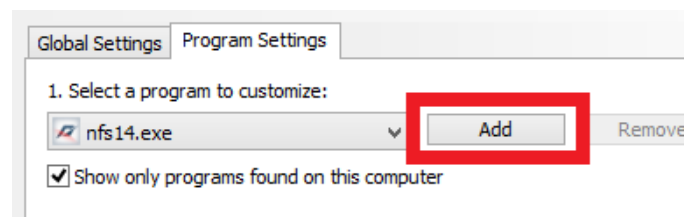
- I. Right click on the desktop and select "NVIDIA Control Panel".



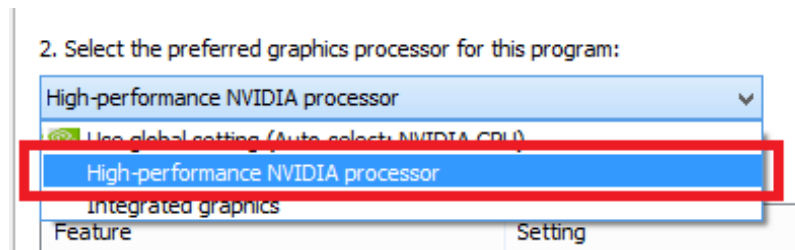
- II. Select "Manage 3D settings".



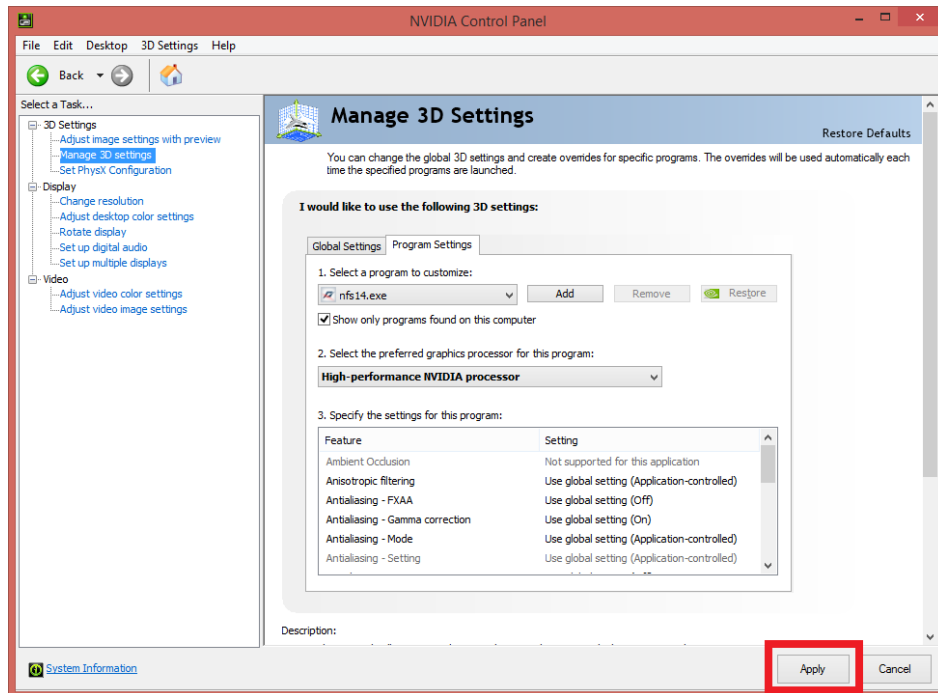
- III. Under Program Settings page, select "Add" to choose the program.



IV. Select “High-performance NVIDIA processor” for the program.



V. Click “Apply” to save the setting.



*NOTE:

The power button shows which graphics is currently in use. (The power button lights orange when the discrete GPU is in use. Otherwise, it lights white/blue when the integrated GPU is in use.)