

How to Install Windows OS on Free DOS platform

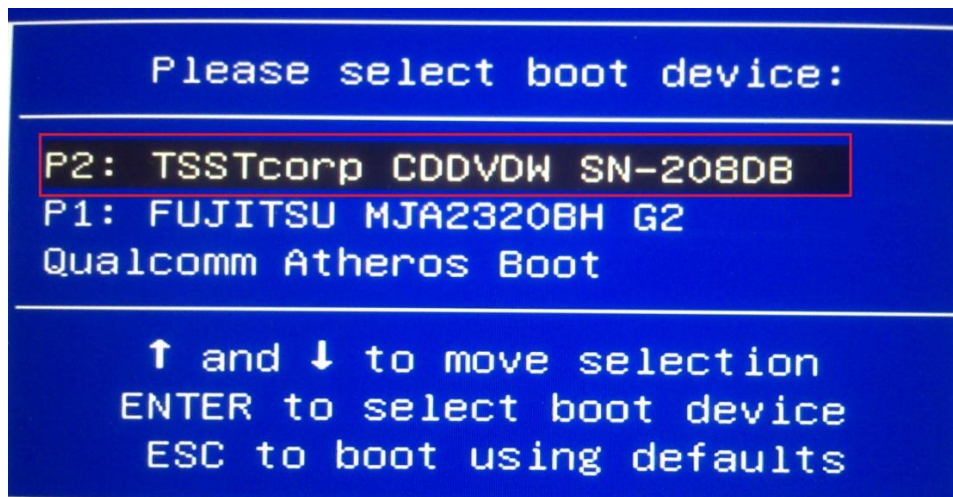
1. REQUIREMENTS

- (1) MSI Free DOS platform.
- (2) Windows OS Installation Disc.

2. INSTALL OS/drivers on Free DOS system

Part 1, Install OS

1. Press power key then press the [F11] to enter the boot menu. Select CD/DVD ROM to boot up system. (e.g. choose TSSTcorp CDDVDW SN-208DB)

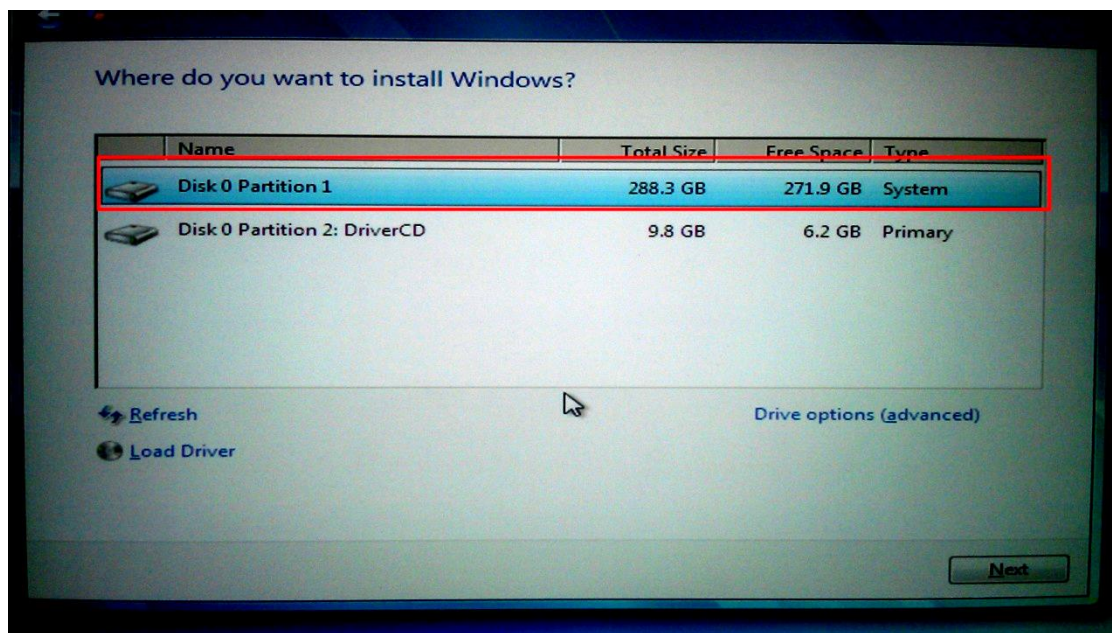


Note 1: Some platform have to enter to BIOS and change the boot priority.

Note 2: Please make sure the AC power is plug-in.

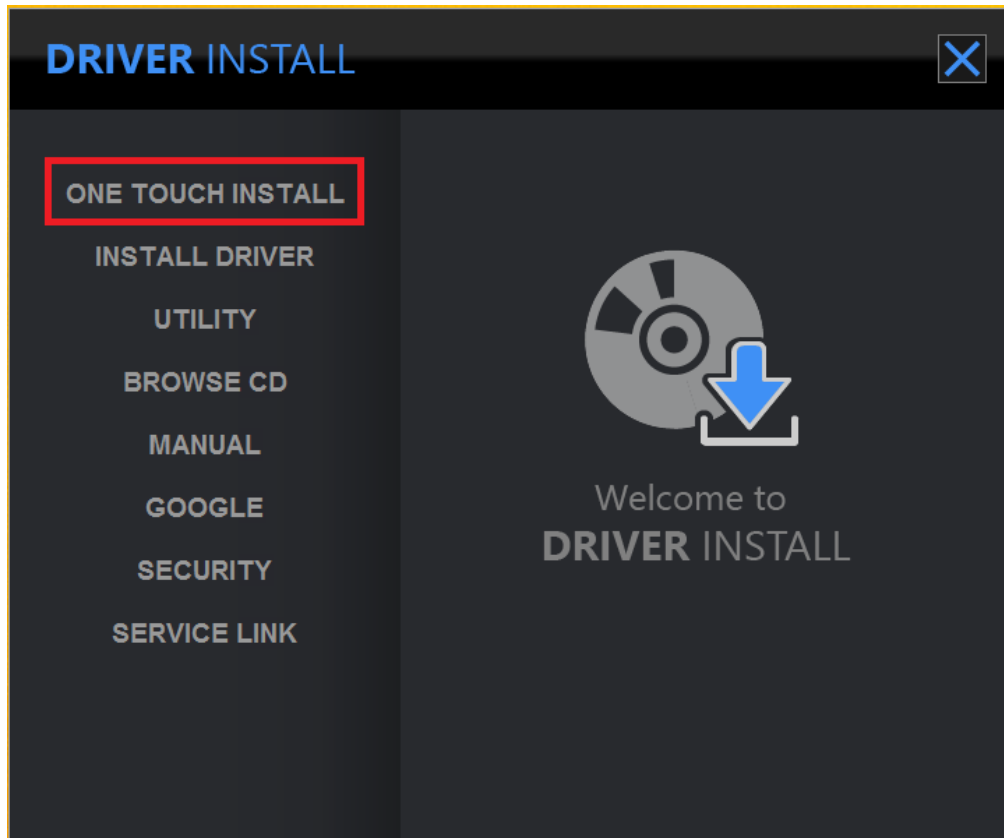
2. Please continue Windows installation. We have to be deleted system partition manually. Then, recreate new partition to install your OS. After that, press [Next] to continue.

CAUTION: Do Not format/delete/modify [Driver CD] partition. MSI driver package will be affected/broken by those kinds of operations. MSI strongly recommend that user should keep the Driver CD partition. If you select UEFI mode in BIOS, must delete all of partitions then recreate new partition to install Windows. All of drivers could be found on physical driver CD.



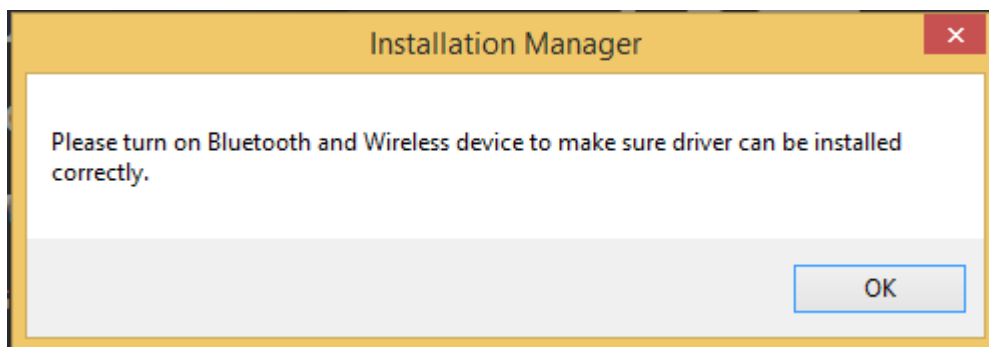
Part 2, Install driver CD

1. Enter the driver CD partition.
e.g. DriverCD (D:) 6.18GB free of 9.76GB
2. Launch the [CDSetup] to start installing device drivers.
3. Select [ONE TOUCH INSTALL]option. Then, system will install drivers /applications automatically.



4. Press [OK] to continue the procedure.

5. Please make sure turn on BT and WLAN devices and press the [OK] to continue.



6. System will show Install status during the process.

7. Click [OK]. System need to reboot to finish installation.

8. After OS rebooting, you can check the install status and enjoy your bright new system.

Installation List	Status
INTEL CHIPSET DRIVER	Finished
INTEL ME DRIVER	Finished
INTEL IRST DRIVER	Finished
INTEL VGA DRIVER	Finished
NVIDIA VGA DRIVER	Finished
REALTEK AUDIO DRIVER	Finished
BIGFOOT LAN + WLAN DRIVER	Finished
REALTEK CARD READER DRIVER	Finished
BIGFOOT BLUETOOTH DRIVER	Finished
SYNAPTICS TOUCHPAD DRIVER	Finished
RADIO SWITCH DRIVER	Finished
SSE	Finished
XSPLIT GAMECASTER	Finished
DRAGON GAMING CENTER	Finished
SYSTEM CONTROL MANAGER	Finished
GOOGLE TOOLBAR FOR IE	Finished
GOOGLE CHROME	Finished

Note 3: We also can install individual driver /application which we need by [INSTALL DRIVER] option.

Note 4: NBs which have GPU switch button (Such as GT80, GT70, etc.) need to select iGPU or dGPU to install Intel graphic driver or Nvidia graphic driver.

