



How to upgrade to Windows 8 on 110W SOP Manual

Declaration:

- i. Please backup your personal data before the upgrade. All data will be erased during the upgrade process.
- ii. GPS function is not supported by the Windows 8, so there will be an “CP2103 USB to UART Bridge Controller” in the *Other devices* category of the *Device Manager*.

Tools needed:

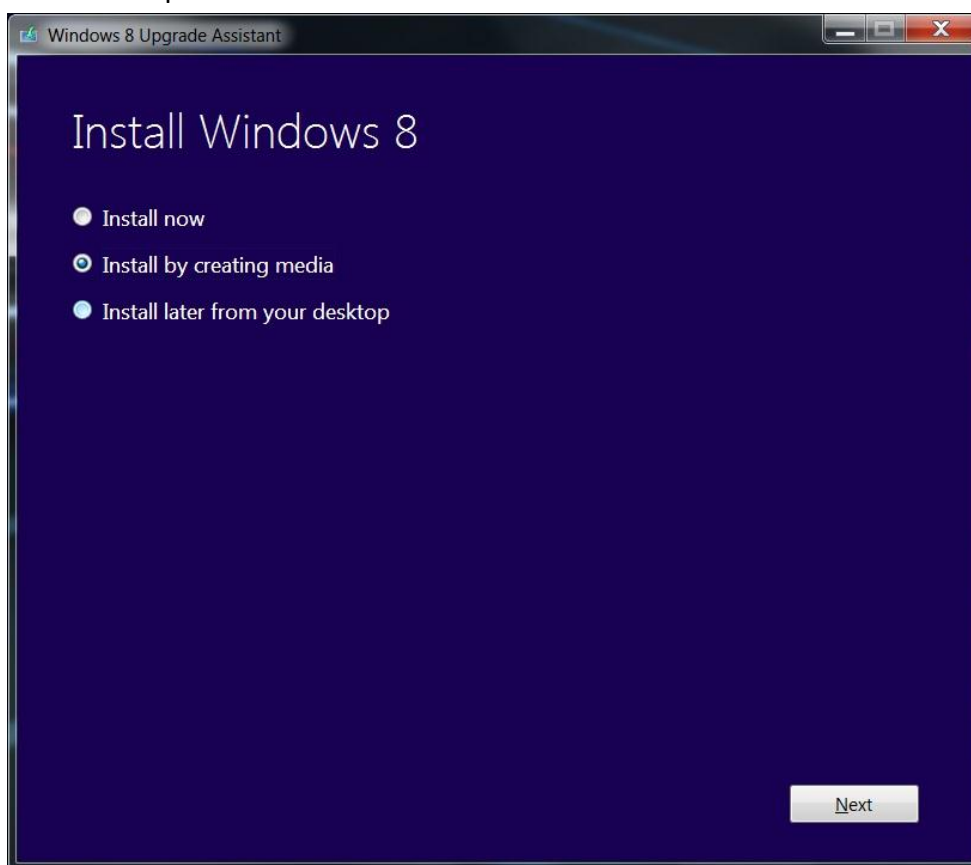
- i. A USB hub (At least 4 ports).
- ii. A USB keyboard.
- iii. A USB flash disk with at least 4GB above. (All data will be erased on it.)

Preparation:

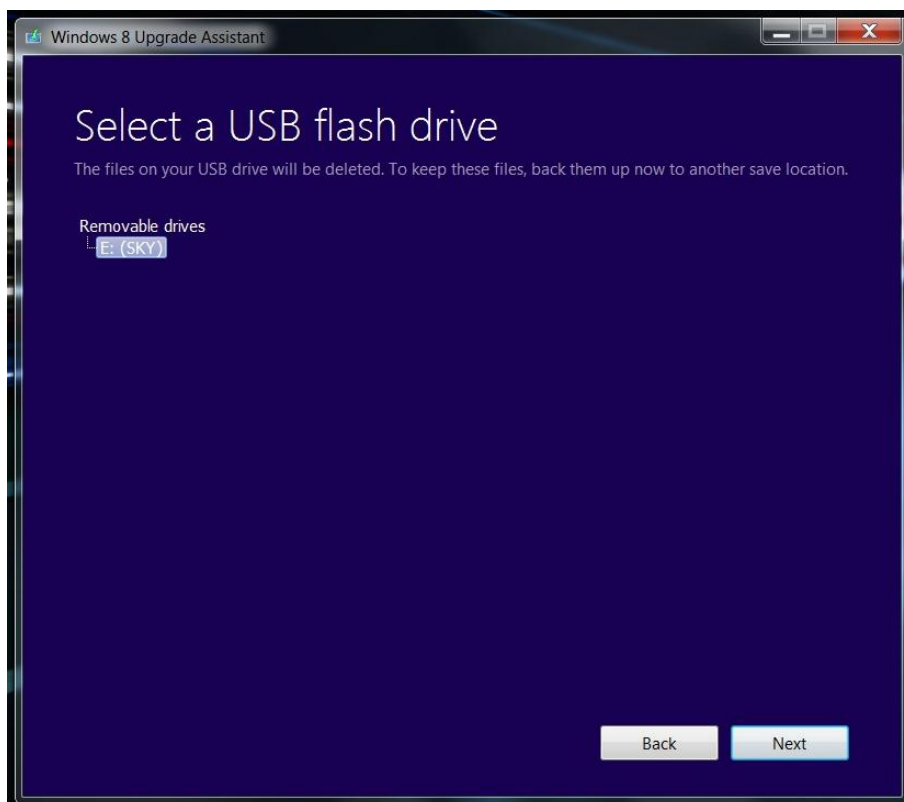
1. Download the Windows 8 by using *Download Upgrade Assistant*, and there will be a shortcut “*Install Windows*” on the *Desktop*.



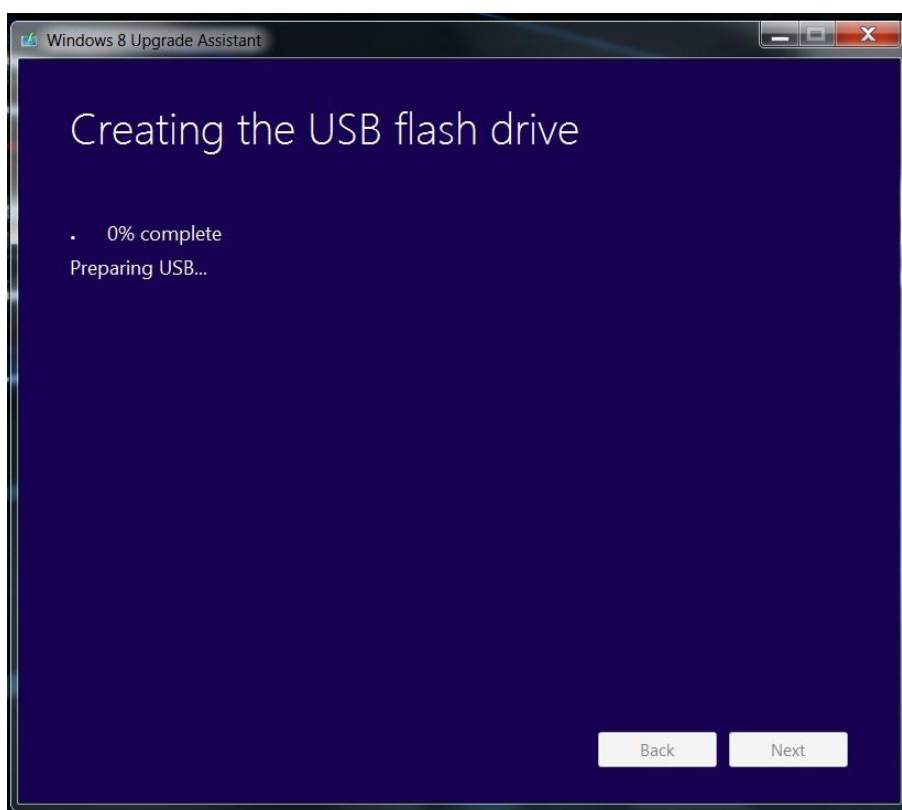
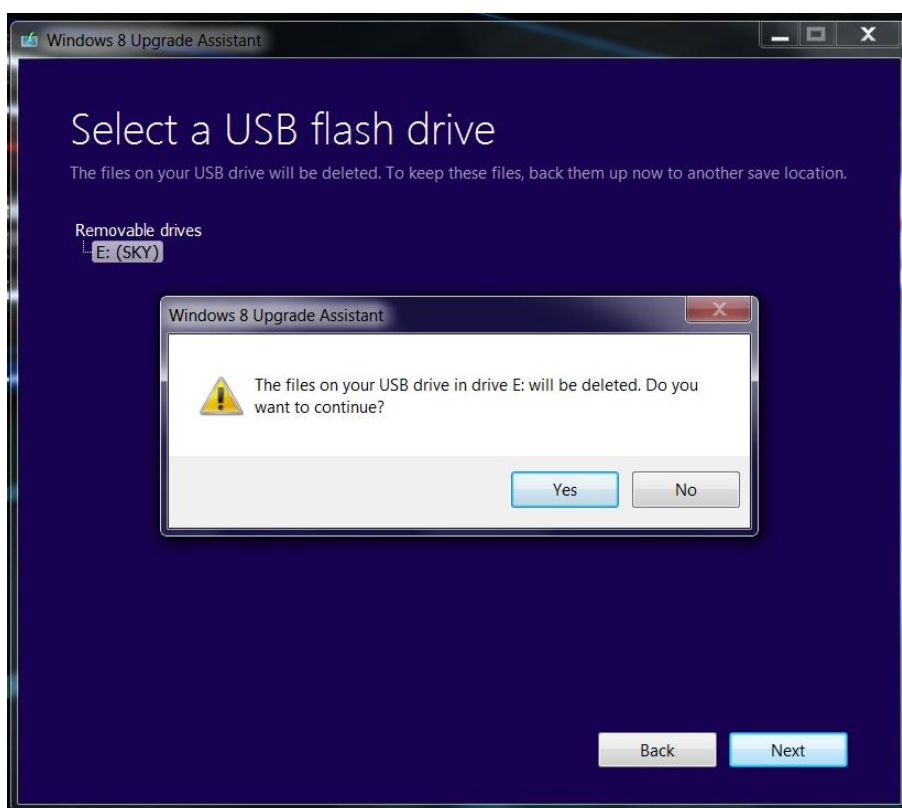
2. Insert the USB flash disk to the laptop, select “*Install Windows*”, then select “*Install by creating media*” and press “*Next*” to continue.



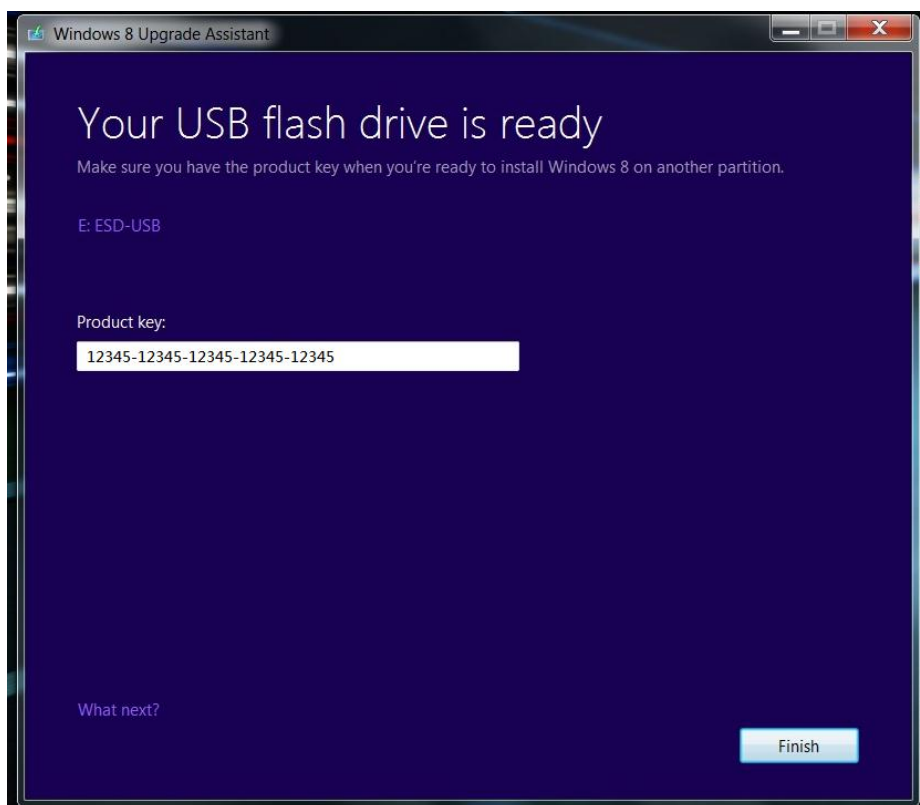
3. Make sure the letter of the disk and select “Next”.



- The program will prompt you the files on your USB drive will be deleted. If you are sure about this, select “Next” to start building the USB drive for Windows 8 system installation.



5. After it's finished, the program will show your Windows 8 product key on the screen, and please remember this for further use. Press "*Finish*" to complete the process.



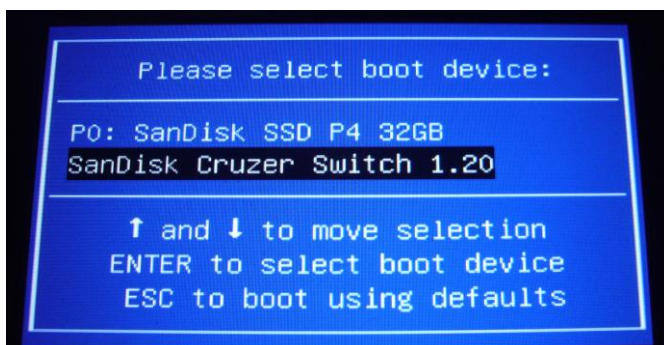
6. Connect to the MSI official website to download the drivers and utilities (including O-Easy).

Windows 8 Upgrade Process

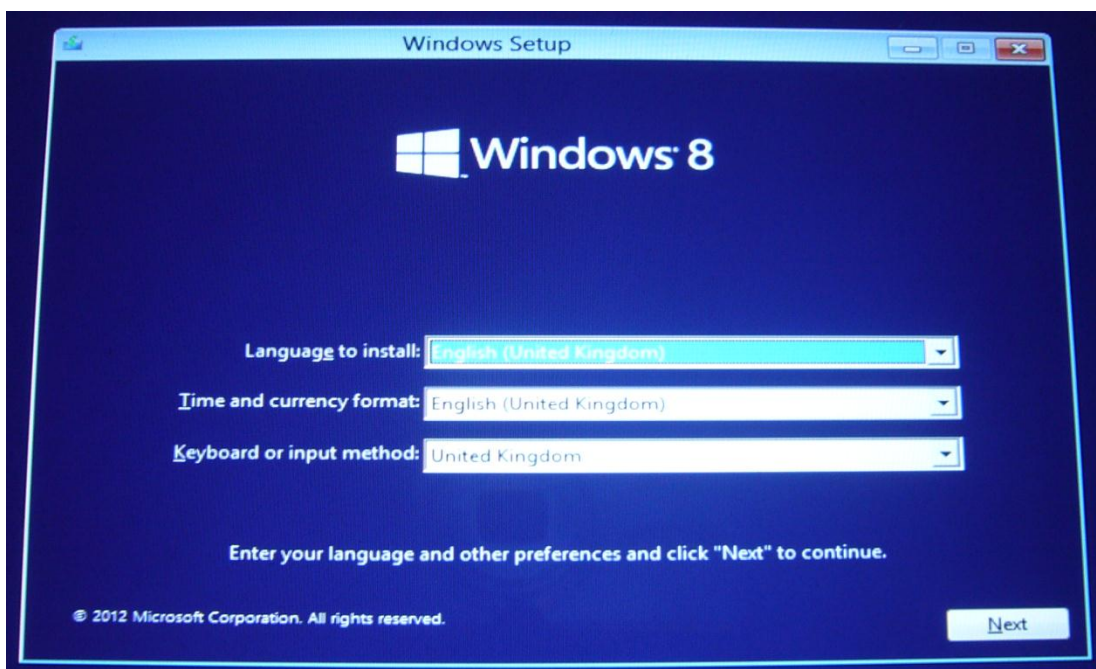
1. Apply the power by the AC adapter and connect the USB drive (which you had prepared for Windows 8 installation), a mouse, and a keyboard to the 110W by the USB hub.



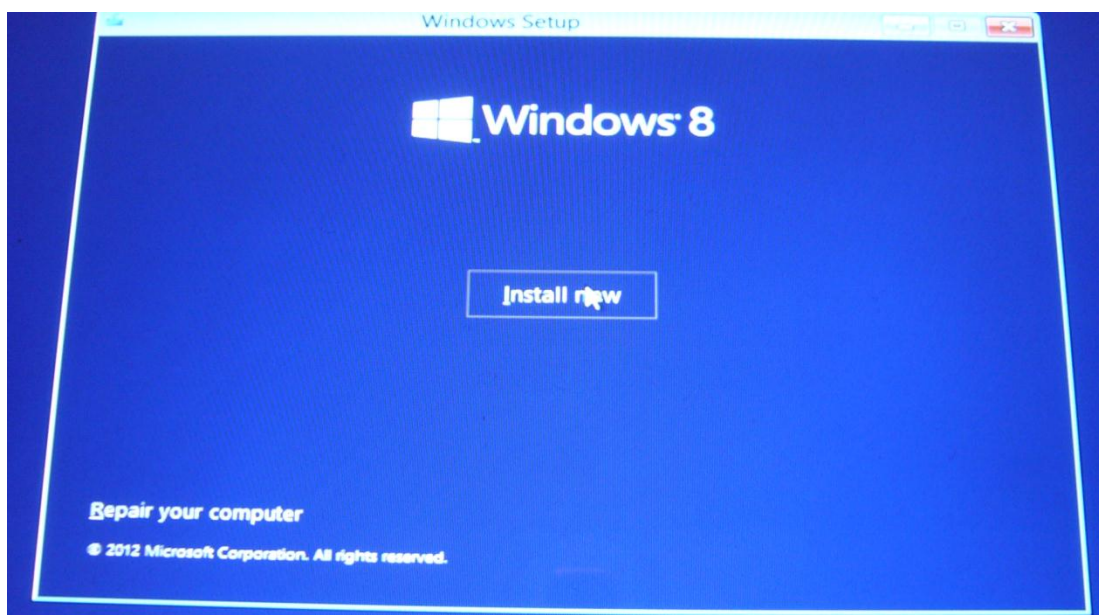
2. Boot up the 110W. When there's a MSI logo appeared, press "F11" key to invoke the boot menu. Select booting from the USB drive.



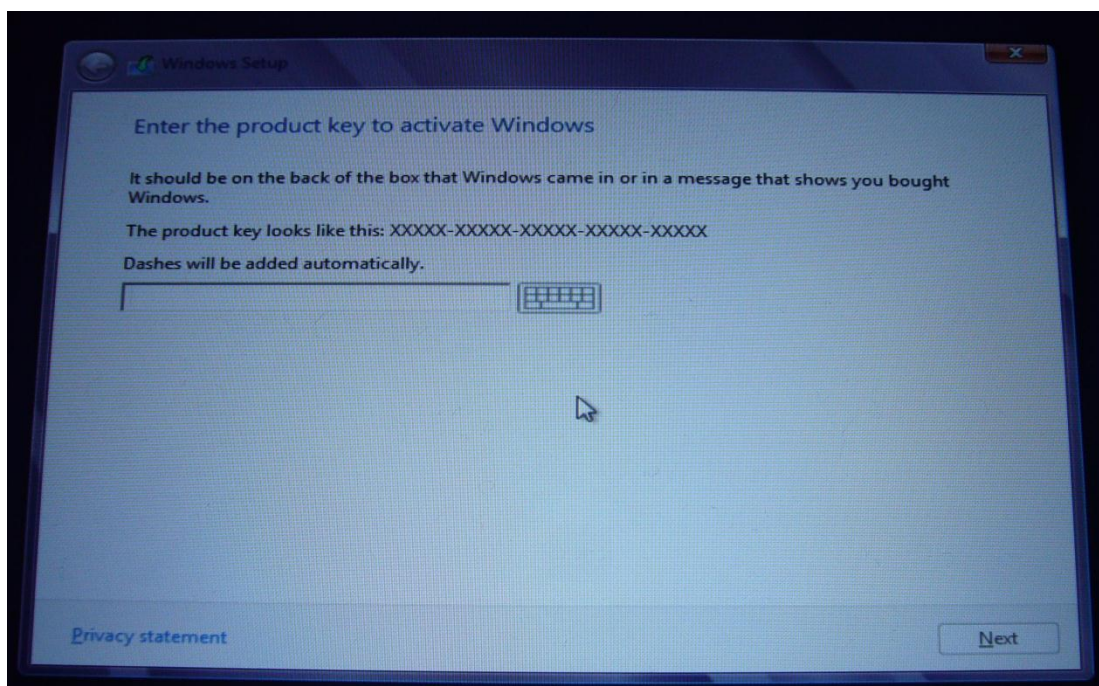
3. Select "Next".



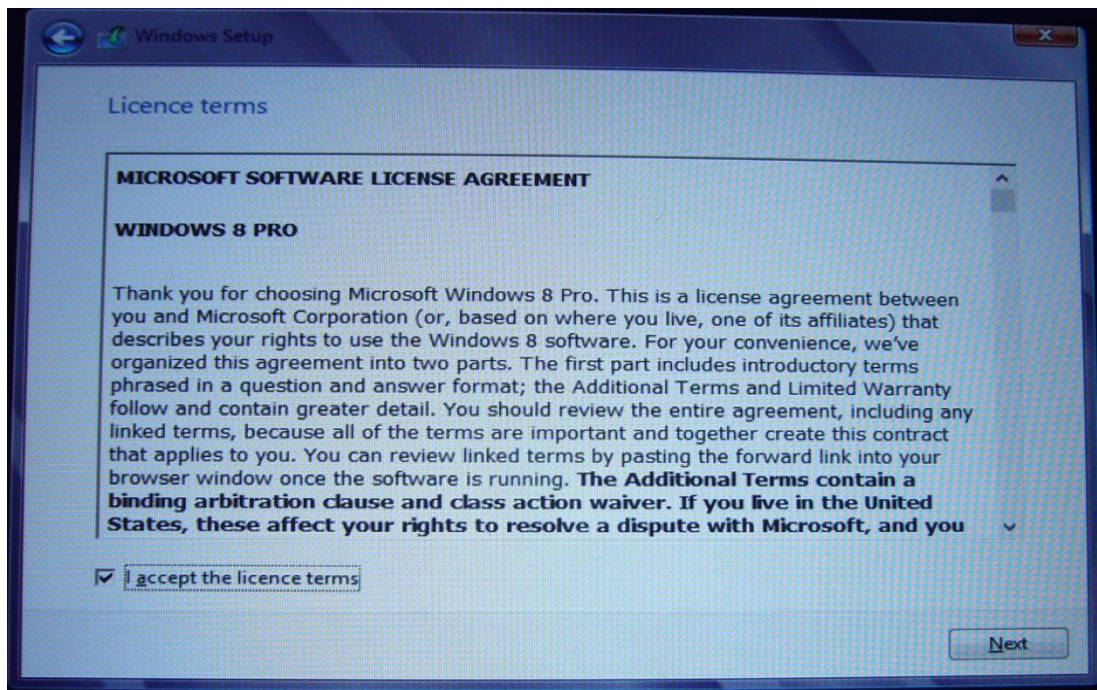
4. Select "Install Now".



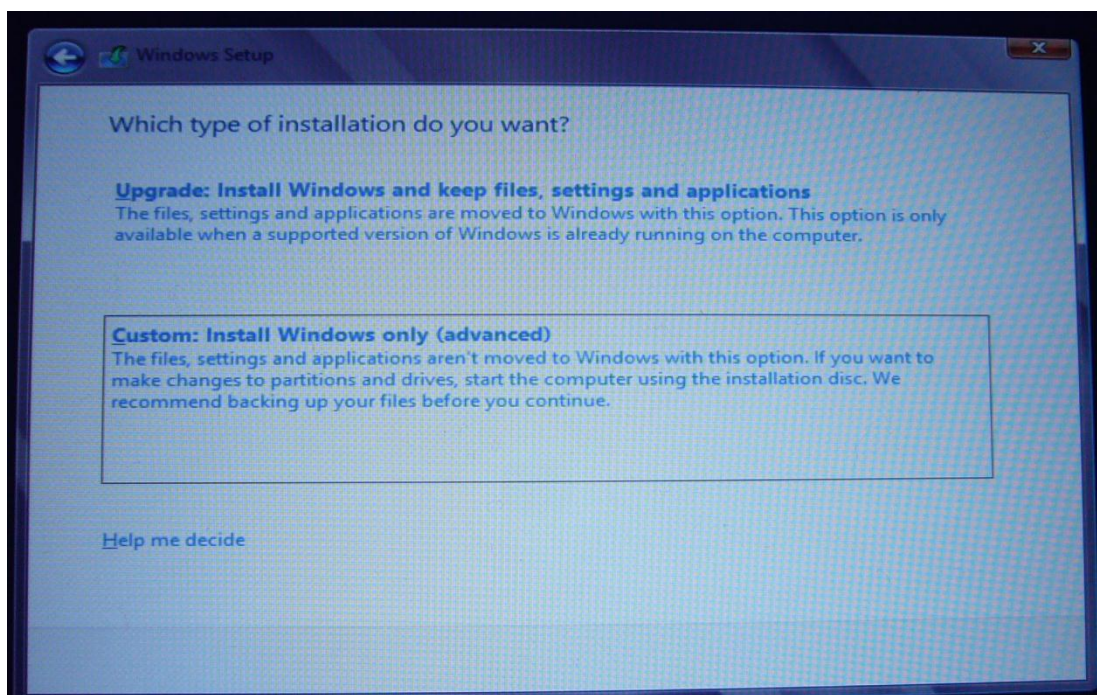
5. Input the Windows 8 product key. (The key you had just remembered in the last step of the process when you are building a Windows 8 installation drive.)



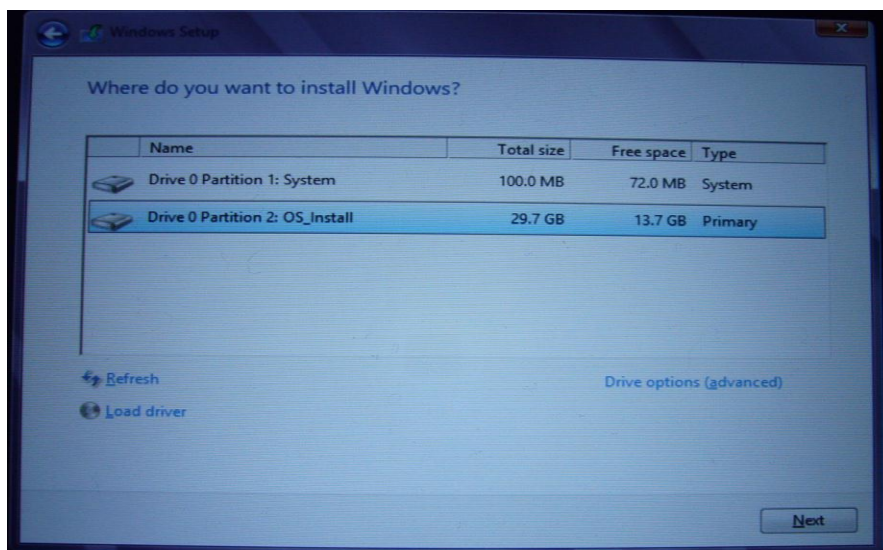
6. Select “I accept the license terms” and select “Next”.



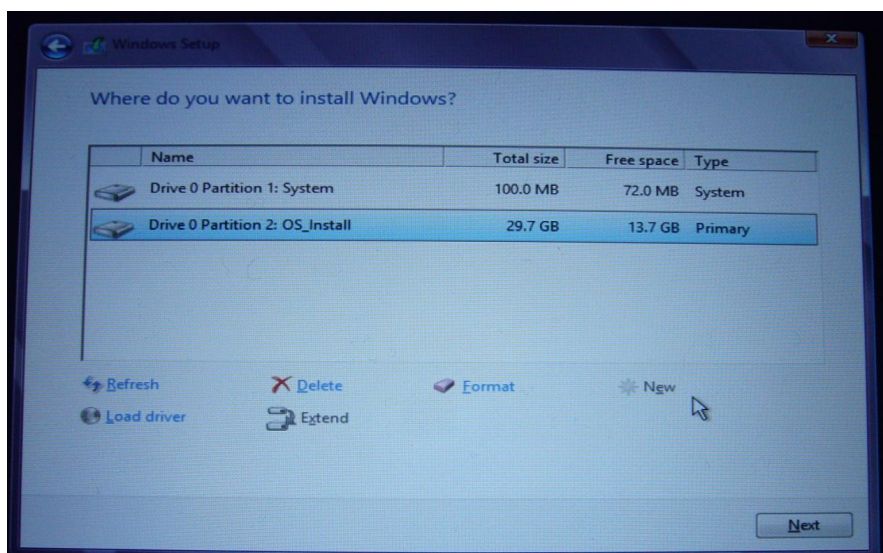
7. Select “Custom: Install Windows only (advanced)”.



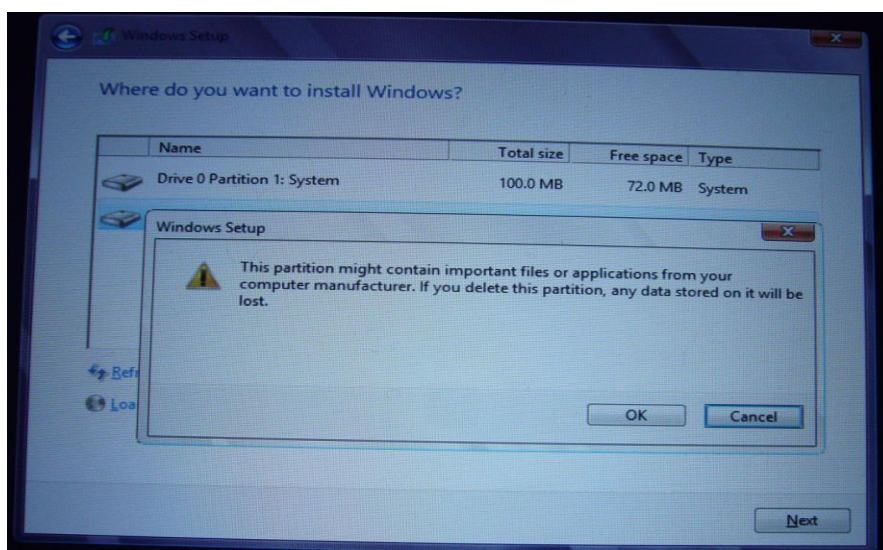
8. Select “Drive options (advanced)”.



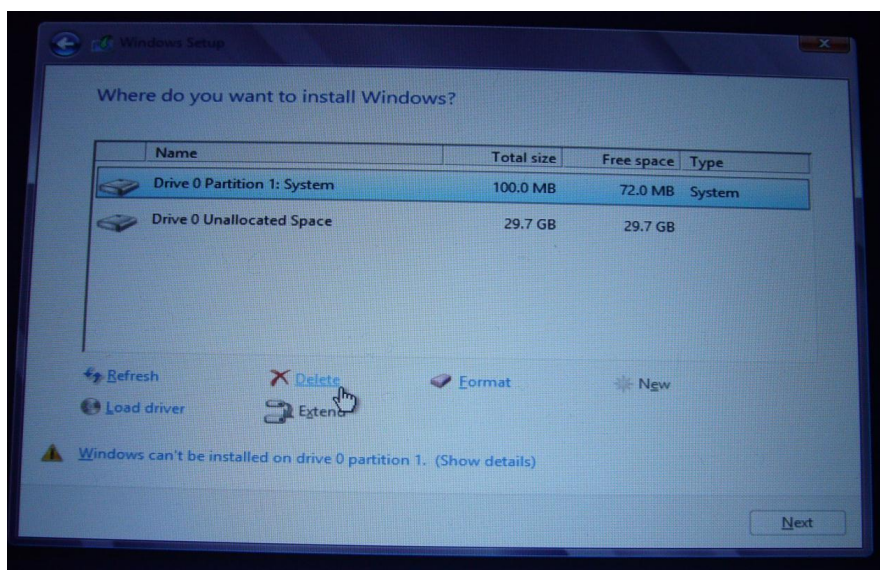
9. Select “Drive 0 Partition 2: OS_Install”, and select “Delete”.



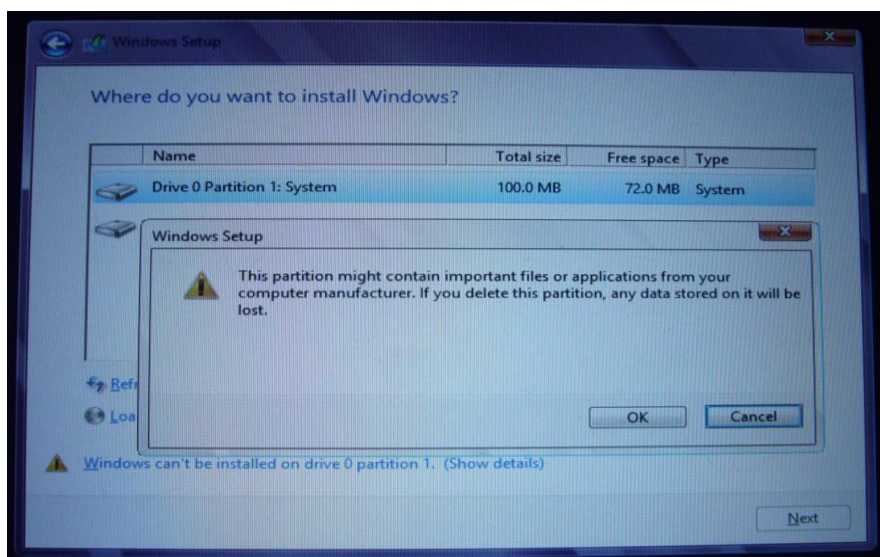
10. The system will prompt you the data will be deleted, and select “OK” to continue if you can accept.



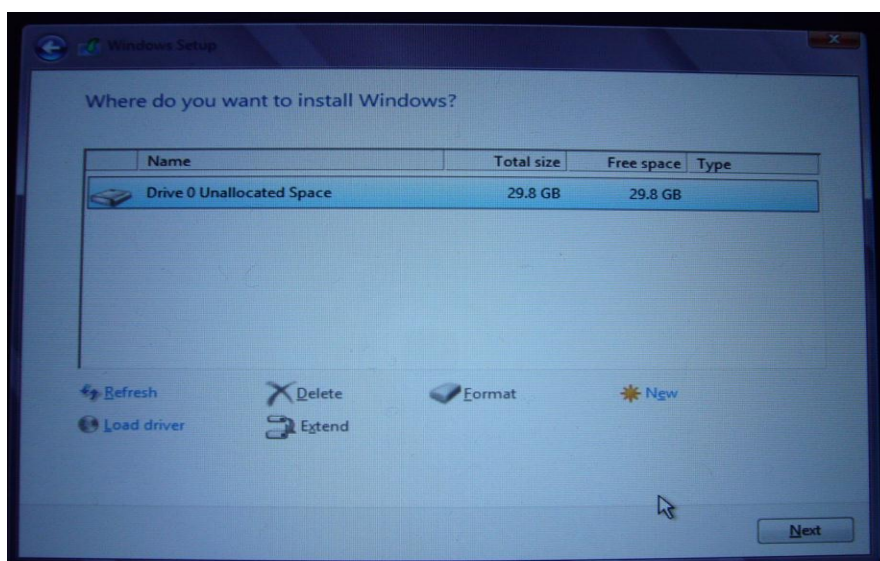
11. Select “Drive 0 Partition 1: System” and select “Delete”.



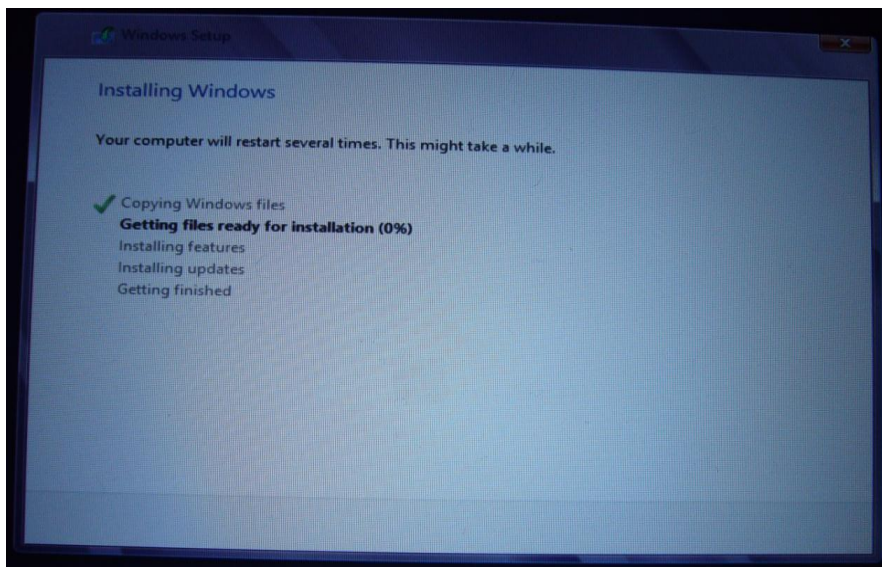
12. The system will prompt you the data will be deleted, and select “OK” to continue if you can accept.



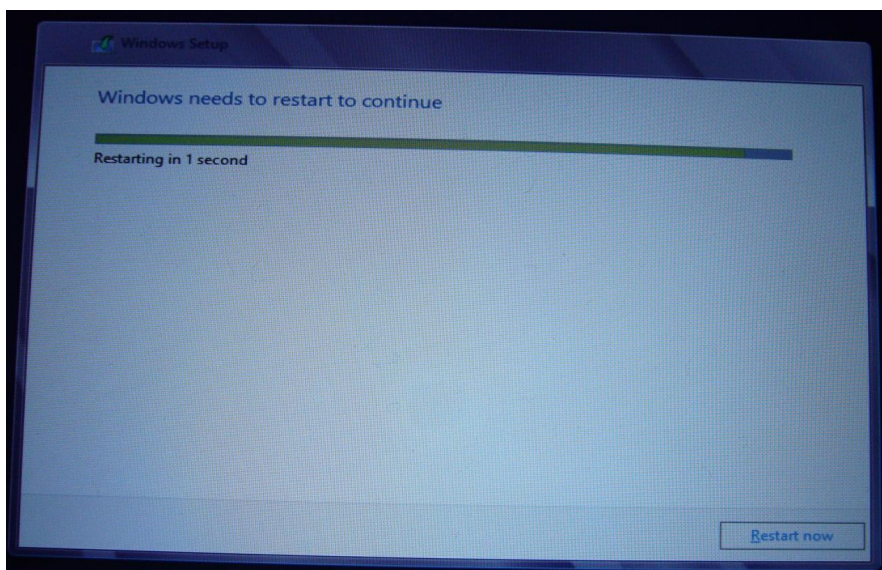
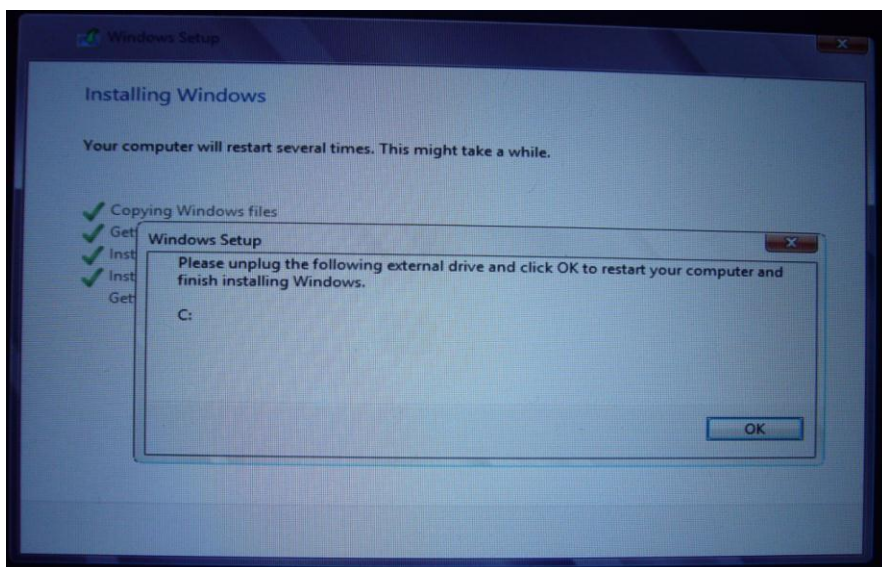
13. Once all partitions are deleted, just select “Next” to continue the installation.



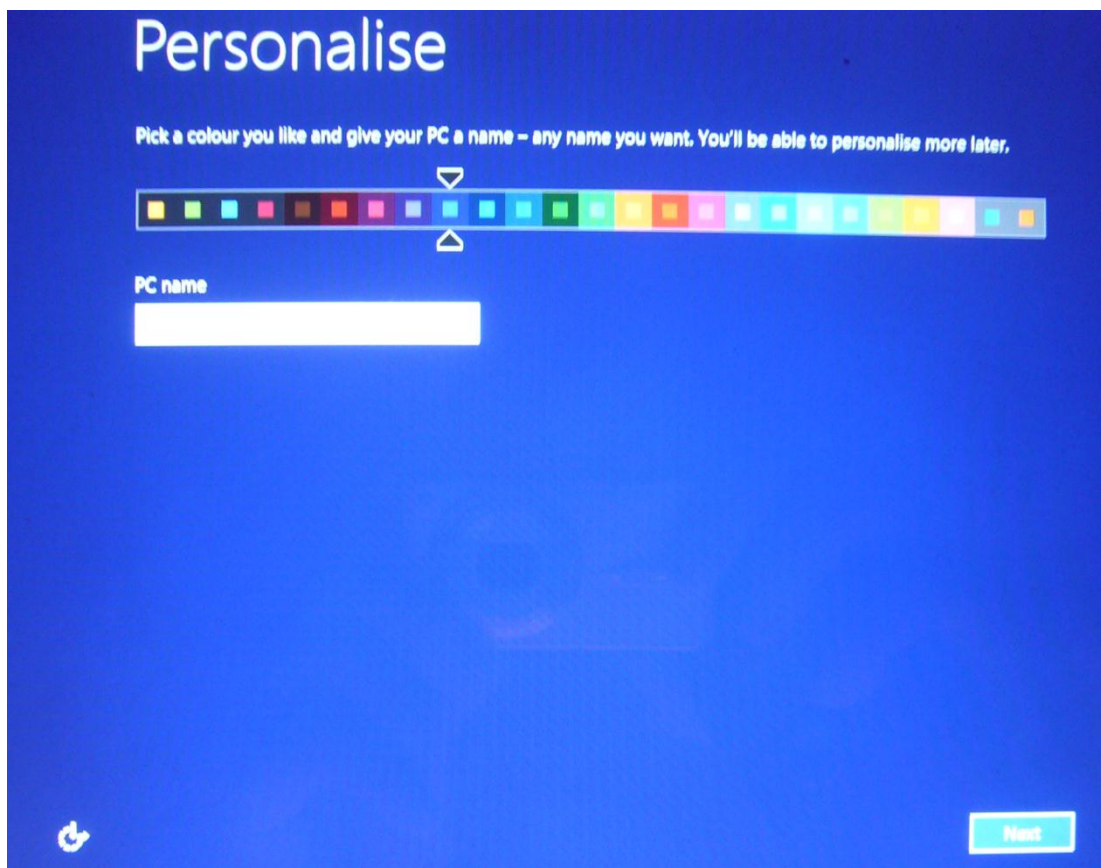
14. The system will start the Windows 8 installation.



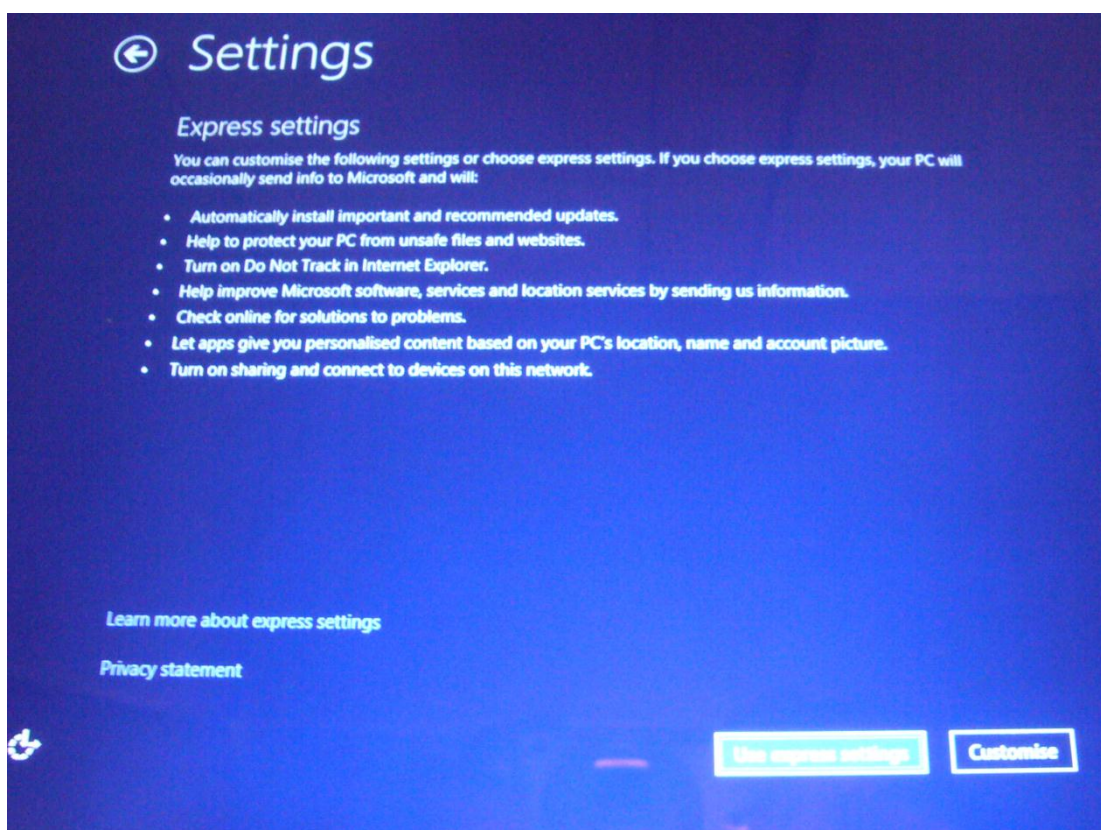
15. When it's finished, the system will prompt you to remove any external drives. Please remove the USB drive and press "OK" to reboot.



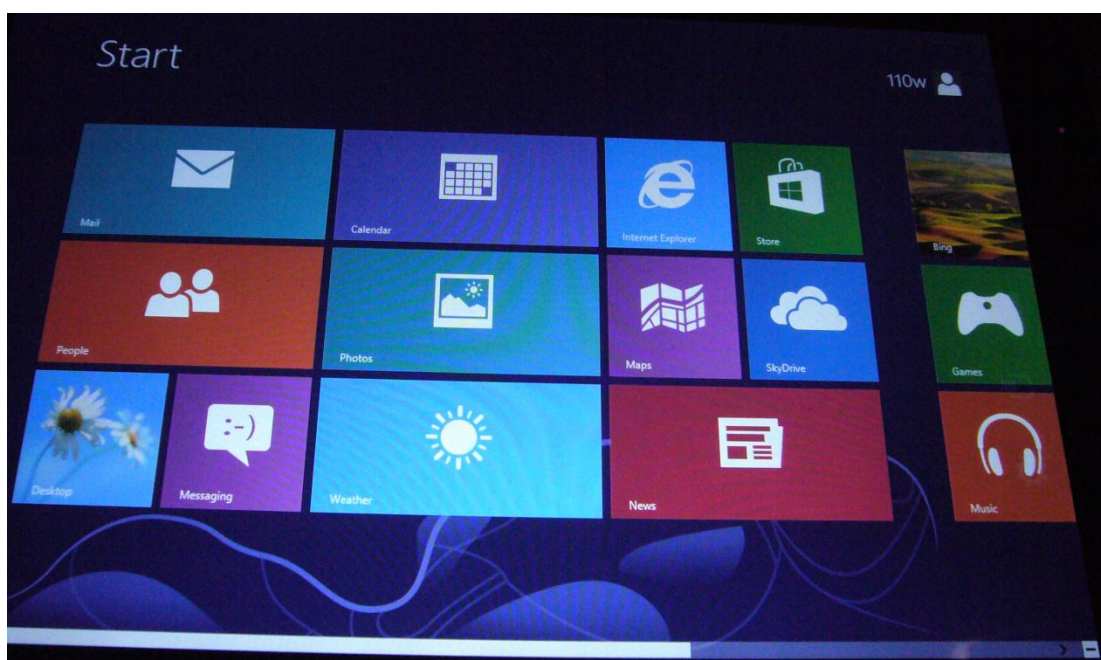
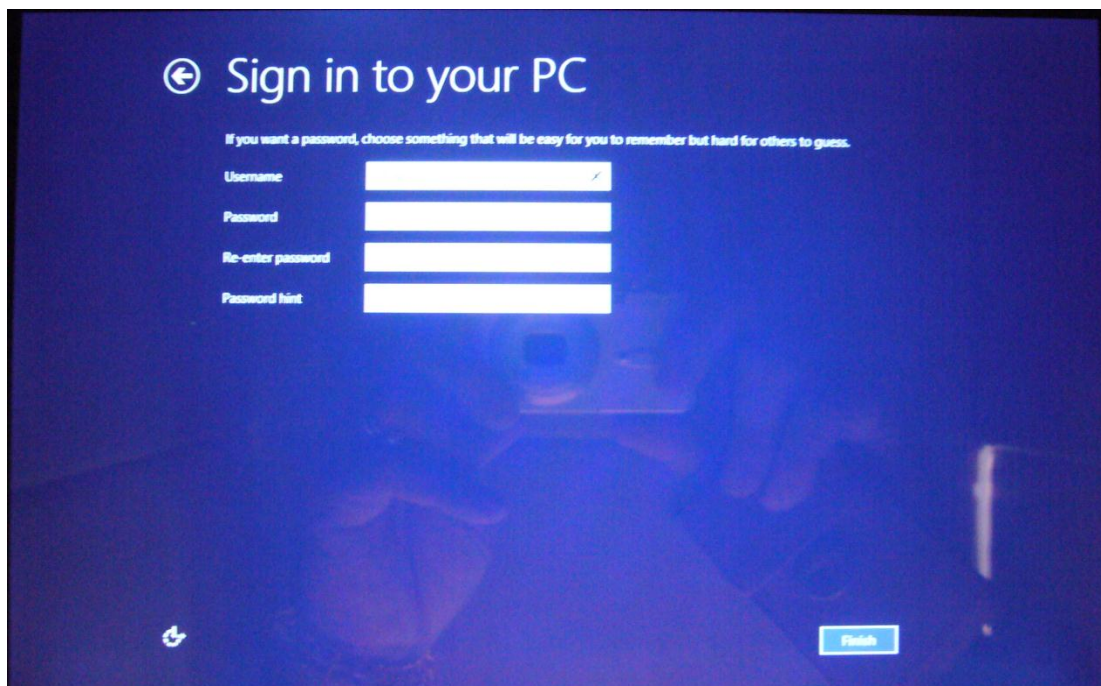
16. In *Personalize* stage, input the name of the laptop and select “Next” to continue.



17. Select “Use express settings”.



18. Input the username and press “Finish” to complete the installation of the Windows 8.



19. After the initialization is finished, you can now install the necessary drivers or utilities.