

ECO power saving mode / ECO省電功能

Q: How to set the ECO power saving mode?

如何設定 ECO 省電功能?

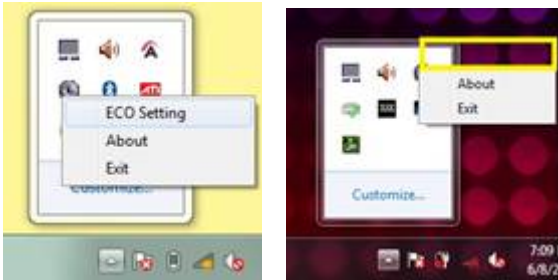
A:

1. Right click the SCM icon in taskbar.

在 SCM 圖示按右鍵

Note: The ECO setting will be hidden during ECO function is enabled. Please make sure the status is ECO off.

注意: 當 ECO 省電功能啟動時, ECO 功能選單會被隱藏。請確認 ECO 省電功能為關閉狀態



2. ECO menu would appear after you click the ECO setting item.

按下右鍵後會出現如下圖的 ECO 選單



Note: If this menu is set, it will turn off the Device which is set to be turned off in this menu when ECO is executed.

This function is executed when User executes ECO cycle and reaches “Turbo Battery” this status mode.

注意: 當 ECO 功能[Turbo battery]啟動時, 選單內被勾選的裝置就會被關閉電源進入省電模式

Notice:

1. The device BT/WLAN/Webcam/LAN/ODD showed which the model equipped with inside.

系統會顯示裝配在機器上的裝置, 如藍芽/無線網路/視訊裝置/光碟機



2. When the ODD sets to disabled, you will see the pop-up message when ODD function sets disabled with ECO – Turbo Battery mode.

The function to disable ODD in ECO power saving mode would not work when there is a disc inside.

當光碟機電源被關閉時，系統會自動警示在 ECO 省電功能啟動時，光碟機電源將被關閉
若光碟機中仍有光碟正在讀取，此項功能則不會關閉光碟機電源



3. Some special conditions will be interpreted in the list below.

請注意下列步驟會導致 ECO 省電功能設定中斷

1. ECO would not forbid User to change modes halfway. After changing modes halfway, ECO will still circulate with its rules if User presses once on ECO's Key.

[The circulate are 1. Gaming; 2. Movie; 3. Presentation; 4. Office; 5. Turbo battery and 6. ECO off]

ECO 不會禁止使用者中途自行切換模式，中途切換後，User 再按一次 ECO's Key，ECO 還是會照自己的模式動作。

ECO 功能順序為: 1. Gaming; 2. Movie; 3. Presentation; 4. Office; 5. Turbo battery and 6. ECO off

2. After resuming from Sleep mode or hibernate, ECO will not be cancelled.

從休眠或睡眠回復時，ECO 會恢復，也不會顯示 ECO 功能圖示。

3. After turn-off or restart the system, ECO will be cancelled.

關機或重開機，ECO 省電功能會被取消。

4. ECO is able to be executed under AC and DC mode. Plugging would not cancel ECO.

ECO 省電功能可在 AC 或是電源模式下執行，不會因為插上 AC 而取消了省電功能

5. If ECO is cancelled halfway by pressing Turbo Key, ECO's cycle will be able to restart by pressing the quick launch Key "ECO" or "FN + F5 (ECO)".

當執行超頻功能時，ECO 功能就會被關閉。ECO 循環功能可以藉由快速功能鍵 FN + F5 重新設定