

FAQ No. 01933**I need to power ON Windows 10 twice to enter Windows**

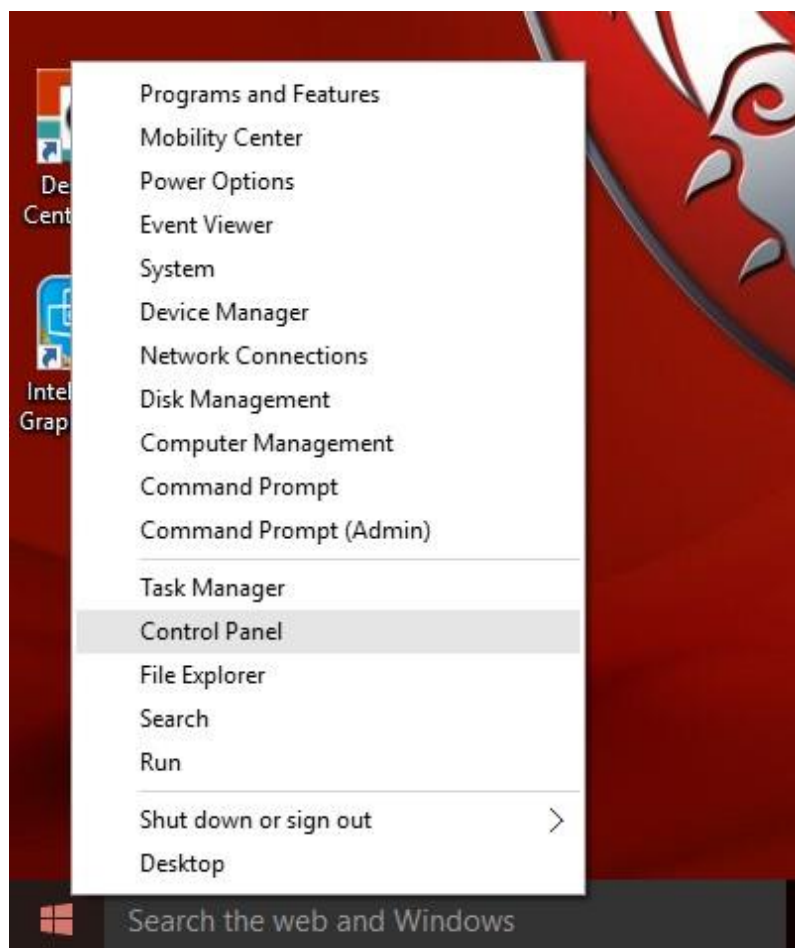
Affected Model: Windows 10

Q: After I upgrade to Windows 10, every time I power ON system, it will auto shut down, and I need to power ON system again to successfully boot into Windows.

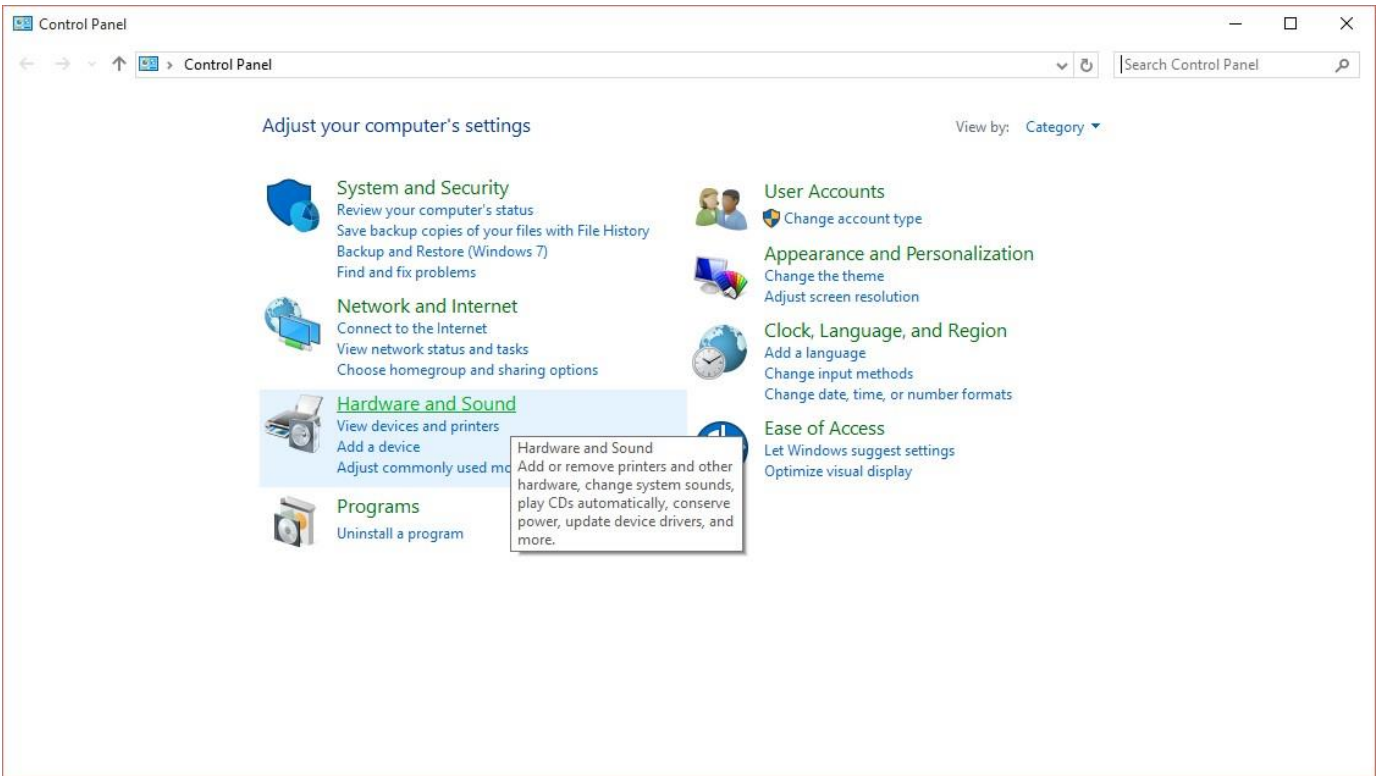
A: Please disable Windows Fast Boot.

On older hardware system, it is not 100% compatible with Windows 10, and some devices can't be recognized well under fast boot mode, please try to disable Fast Boot to avoid the boot problem.

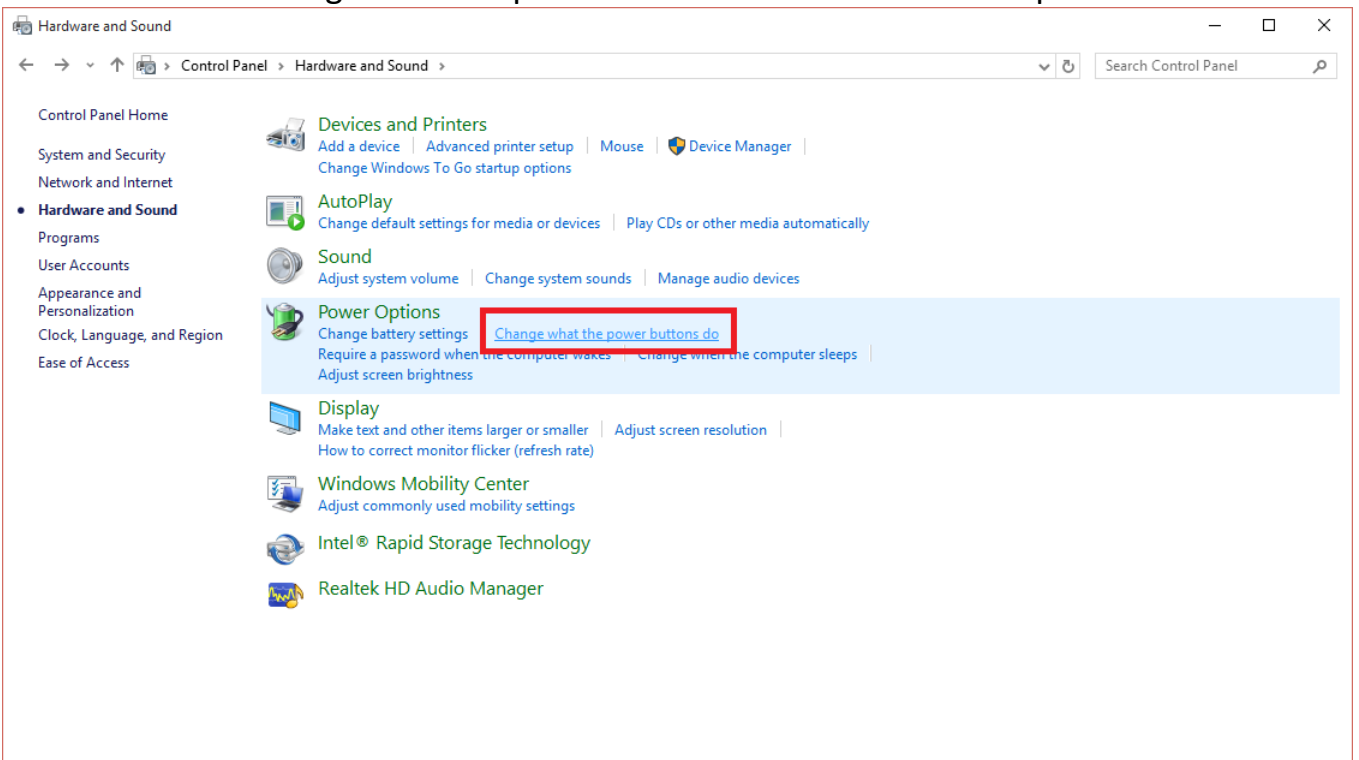
1. Right click on the Windows Start icon. Find Control Panel and click on it to enter.



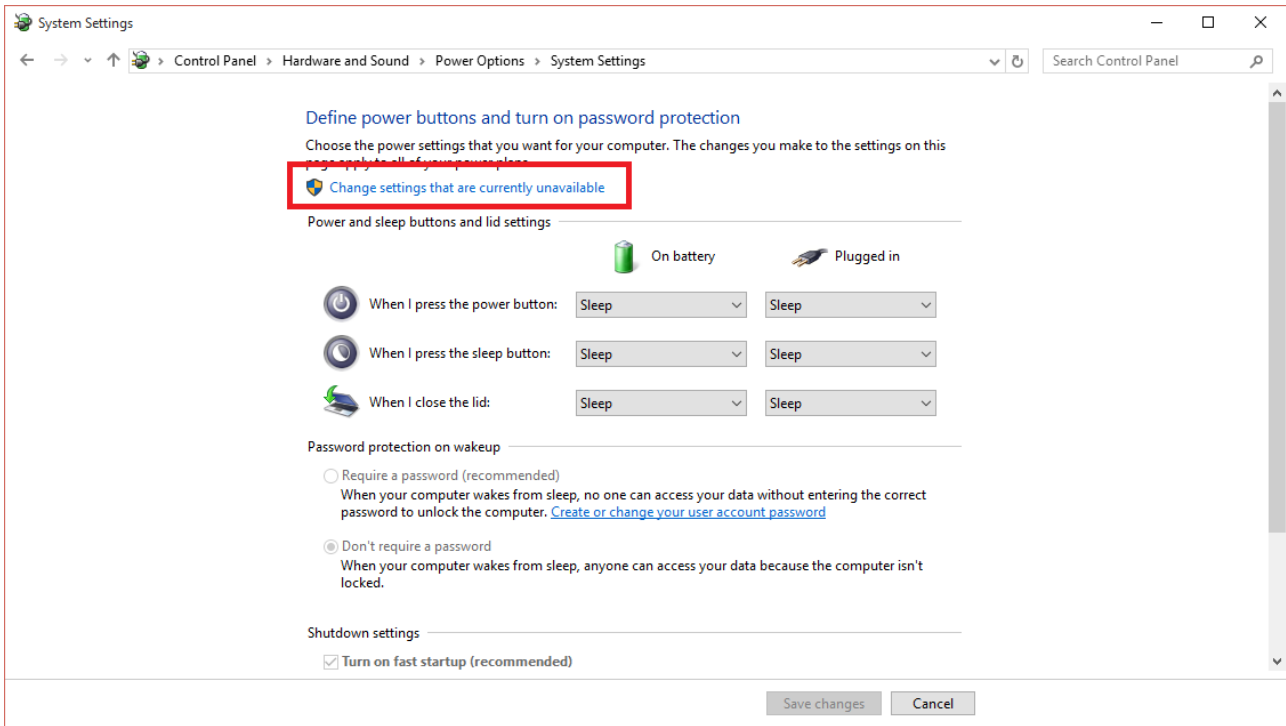
2. Click on Hardware and Sound.



3. Click on the "Change what the power button do" under "Power Options"



4. Click “Change settings that are currently unavailable”



5. Uncheck “Turn on fast startup (recommended)”. Save changes and restart system to finish the setting.

